

RESOLUTION NO. 1866

A RESOLUTION OF THE CITY COUNCIL OF THE CITY OF SOLEDAD
REQUESTING THAT THE MONTEREY COUNTY LOCAL AGENCY
FORMATION COMMISSION AMEND THE SPHERE
OF INFLUENCE OF THE CITY OF SOLEDAD
(GUZMAN II ANNEXATION PROJECT)
APN 022-191-28

WHEREAS, on October 25, 1983, the Monterey County
Local Agency Formation Commission established the sphere of
influence for the City of Soledad in accordance with Section
56425 of the Government Code, and;

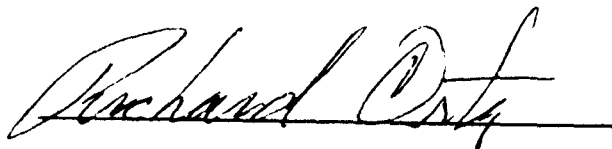
WHEREAS, Section 56426 of the Government Code
requires annexation projects to be consistent with the adopted
sphere of influence, and;

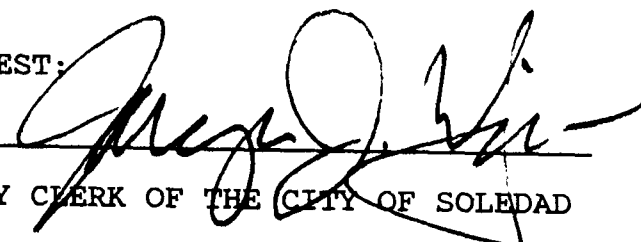
WHEREAS, the City Council of the City of Soledad, by
Resolution No. 1852 has requested that the Monterey County
Local Agency Formation Commission initiate annexation
proceedings for the Guzman II Annexation Project consisting of
the annexation of a .15-acre parcel of land to the City of
Soledad.

NOW, THEREFORE, BE IT RESOLVED that the City Council
of the City of Soledad requests that, pursuant to Section 56428
of the Government Code that the Monterey County Local Agency
Formation Commission amend the City of Soledad's sphere of
influence as shown on Exhibit "A", to include Assessor's Parcel
Number 022-191-28.

PASSED AND ADOPTED by the City Council of the City of
Soledad at a regular meeting duly held on the 27th day of July,
1988, by the following vote:

AYES, and in favor thereof, Councilmembers: Campos
Ledesma, Untalon, and Mayor Ortiz
NOES, Councilmembers: None
ABSENT, Councilmembers: Slagle


MAYOR OF THE CITY OF SOLEDAD

ATTEST: 
CITY CLERK OF THE CITY OF SOLEDAD

LEGAL DESCRIPTION FOR THE
 GUZMAN II ANNEXATION TO THE CITY OF SOLEDAD AND THE
 DETACHMENT FROM THE SOLEDAD-MISSION FIRE PROTECTION DISTRICT
 AND THE GABILAN - SANTA LUCIA RESOURCE
 CONSERVATION DISTRICT.

JULY 7, 1988

Beginning at the intersection of the easterly City Limits Line of the City of Soledad, as said Line bears $N.77^{\circ}16'30"W.$, with the westerly line of the Monterey County Flood Control and Water Conservation District right-of-way; thence from said point of beginning

Along the easterly City Limits line, $N.77^{\circ}16'30"W.$, 61.393 feet; thence

Along the easterly City Limits Line, $S.00^{\circ}30'00"W.$, 243.947 feet; thence

Leaving the easterly City Limits Line, on an arc of a circular curve to the right, with a radius of 250.00 feet, from a radial bearing of $S.89^{\circ}30'00"E.$ through a central angle of $20^{\circ}51'08"$, for an arc distance of 90.984 feet; thence

$N.21^{\circ}28'08"E.$, 94.96 feet; thence

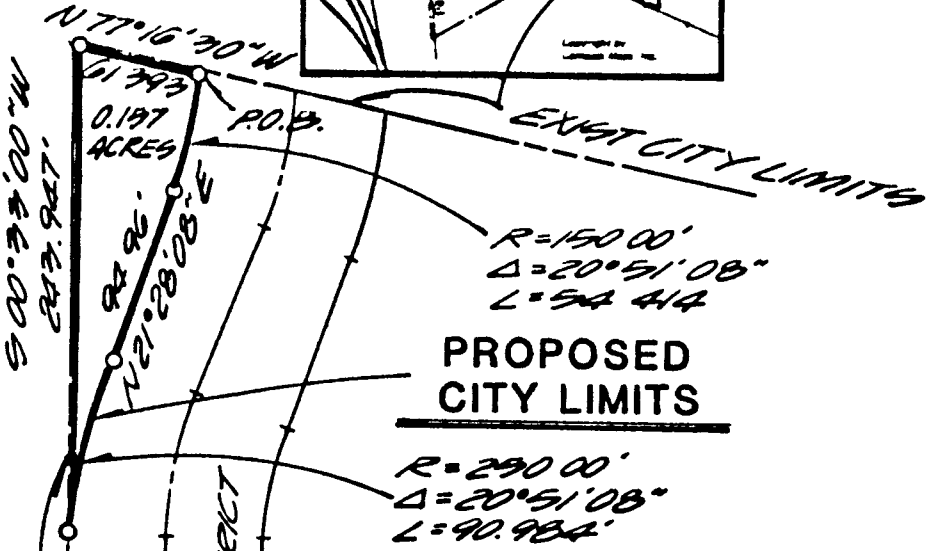
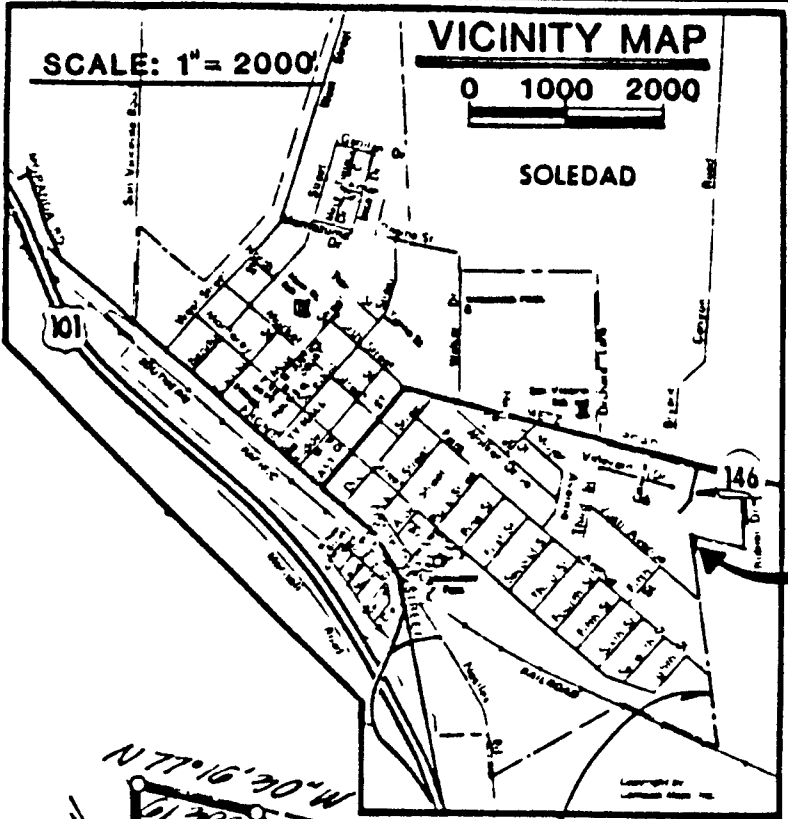
On an arc of a circular curve to the left, with a radius of 150.00 feet, through a central angle of $20^{\circ}51'08"$, for an arc distance of 54.414 feet, to the easterly City Limits Line and point of beginning along said District right-of-way.

Containing an area of 0.157 acres of land, more or less.

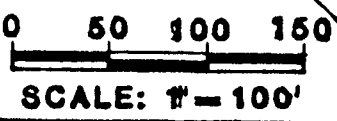
Hanna and Brunetti
 Civil Engineers and Land Surveyors
 7651 Egleberry Street
 Gilroy, California 95020

(408) 842-2173

Exhibit A



POSTAL AVE

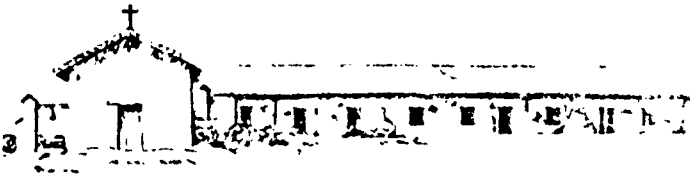


**ANNEXATION TO
THE CITY OF SOLEDAD
IN RANCHO SAN VICENTE
MONTEREY COUNTY, CALIFORNIA**

MANNA & BRUNETTI
CIVIL ENGINEERS & LAND SURVEYORS
7061 BIGLEBERRY STREET - OILROY, CALIFORNIA - 95020
PH: (408) 643-2172

JULY 7, 1988

"A"



MISSION NUESTRA SEÑORA DE LA SOLEDAD FOUNDED 1791

City of Soledad

647 Front Street
Post Office Box 156
Soledad, California 93960
(408) 678-3963

PLANNING COMMISSION

RESOLUTION NO. 88-17

TO: City Council

FROM: Planning Commission

SUBJECT: ZONING AMENDMENT APPLICATION NO. 88-01, FILED BY
WILLIAM LOOK, ET AL, PROPOSING TO PREZONE A .15-ACRE
PARCEL OF LAND TO THE R-1 (SINGLE FAMILY RESIDENTIAL)
DISTRICT AS PART OF A 54 LOT SUBDIVISION

DATE: July 6, 1988

PLANNING COMMISSION ACTION:

At its regular meeting July 6, 1988, the Commission considered the Staff Report and public testimony. It was determined that the R-1 district was consistent with the General Plan and with the approved tentative map for the subdivision.

Commissioner Perez motioned and Commissioner Bigiogni seconded the motion to forward the zoning application to the City Council with a recommendation of approval.

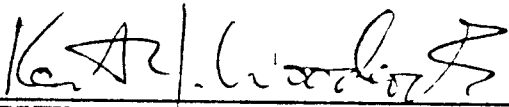
page 2
Planning Commission Resolution
Zoning Amendment Application No. 88-01

VOTING:

AYES, Commissioners: Bell, Bigiogni, Holguin, Perez,
Uribe, Velasquez, and
Chairman Bisi

NOES, Commissioners: None

ABSENT, Commissioner: None



KEITH WOODCOCK, Planning Director
Secretary to the Planning Commission